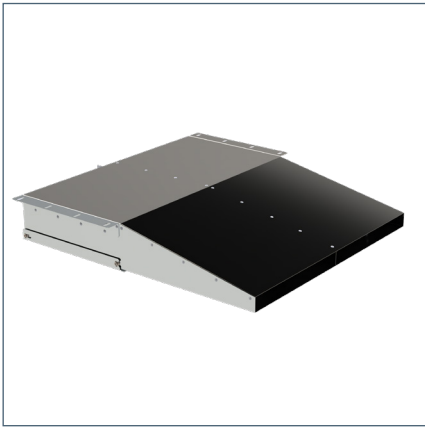


JET FAN BSP PRO



DESCRIPTION

The BSP PRO fan belongs to the group of ductless fans intended for operation in mechanical ventilation systems for garages and underground car parks in the area of domestic ventilation. It reduces concentrations of gases hazardous to health.

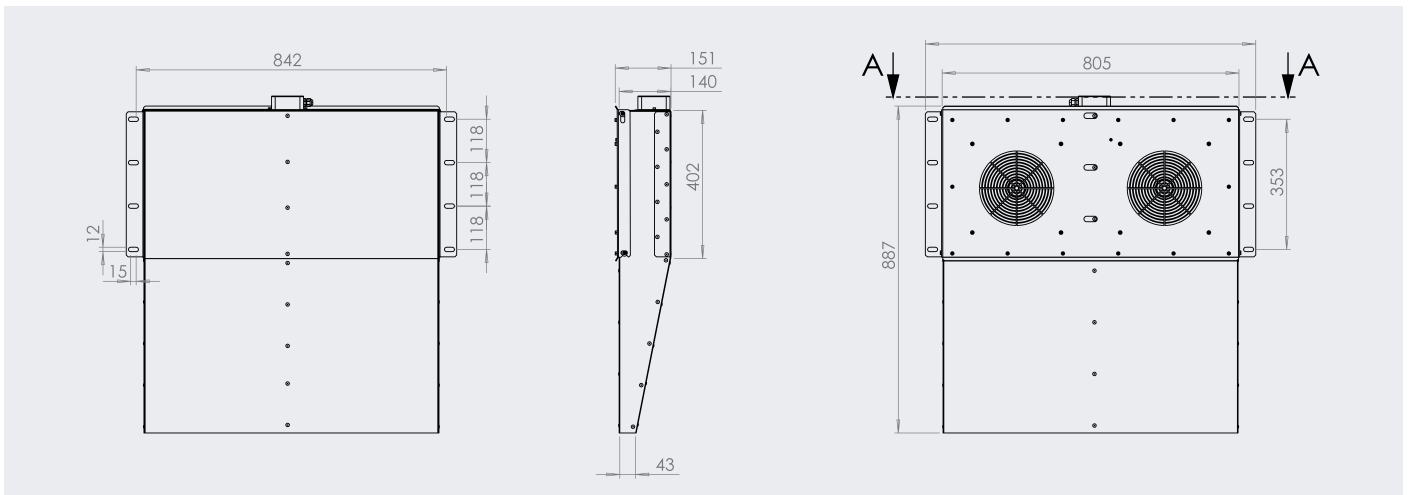
FEATURES

- ideal for low garages
- galvanised steel casing
- inlet grid to prevent damage to the impeller
- easy installation and wiring thanks to a compact design
- space saving, fan height only 15 cm
- energy-saving EC motor
- convenient control by analogue signal 0-10V

TECHNICAL DATA

Phase, nominal power supply [V]	230
Capacity [m³/h]	3000
Maximum pressure [Pa]	815
Maximum thrust [N]	22
Maximum rotor speed [rpm]	2480
Frequency [Hz]	50
Max power consumption [W]	340
Max current consumption [A]	3,5
Control [V]	0-10
Sound pressure level (3m)	62 dB(A)
Weight [kg]	22,6

DIMENSIONS



PERFORMANCE CURVES

