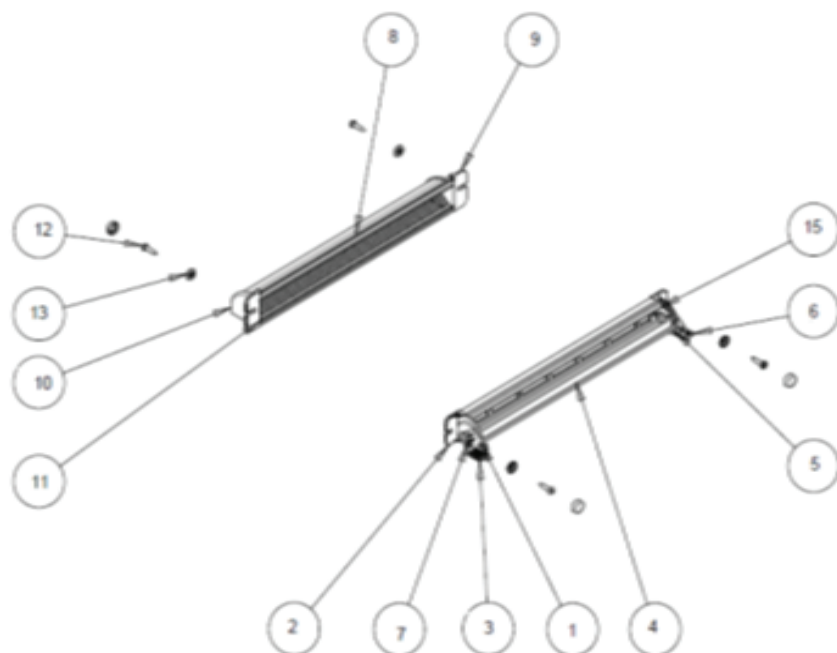


User Guide



1. SM 1400 vent body
2. SM 1400 vent left hand end cap
3. SM 1400 control left hand lever
4. SM 1400 aluminium rotor
5. SM 1400 vent right hand end cap
6. SM 1400 control right hand lever
7. Self-tapping pan head screw
8. SM 1400 aluminium hood
9. SM 1400 hood left hand end cap
10. SM 1400 hood right hand end cap
11. SM 1400 black PVC punched hood grille
12. Self-tapping pan head screw
13. SM 1400 screw washer

Installation Instructions

1. Prepare the slots and pre drill the holes as per Table 1 (overleaf) avoiding glazing rebates.
2. For added weather performance silicon sealant should be used in the groove in the top of the hood.
3. Screws should be Pan-head screws (e.g. No.6 x 5/8 self-tap Pan Pozi S/S A2). Do not use Countersunk screws.
4. The screw should be suitable for the material it is being used in.

Fitting the Internal Vent (See Table 1)

1. Ensure that the vent is in the closed position.
2. Place the vent over the slot and line up with the pre drilled holes. Screw the vent to the frame (care should be taken not to over tighten the screws).

Fitting the External Hood (See Table 1)

1. Place the hood over the slot and line up with the pre drilled holes.
2. Screw the hood to the frame (care should be taken not to over tighten the screws).

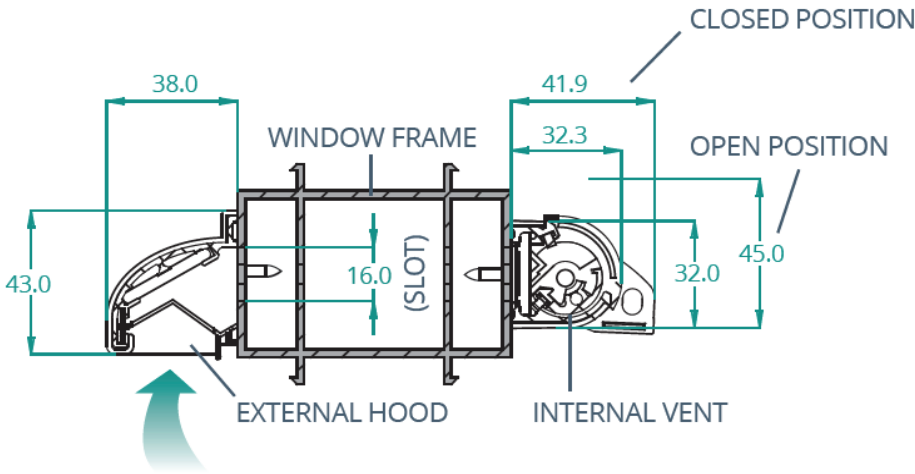
User Guide

Installation Dimensions

Table 1

Min Geometric Open Area (sq.mm)	Min Equivalent Open Area (sq.mm)	O/A Slot Height (mm)	O/A Slot Length (mm)	O/A Vent Length (mm)	Vent Hole Centres (mm)	O/A Hood Length (mm)	Hood Hole Centres (mm)
2296	1575	16	160	200	188	200	182
2996	2200	16	210	250	238	250	232
3696	2825	16	260	300	288	300	282
4396	3450	16	310	350	338	350	332
5096	4075	16	360	400	388	400	382
5796	4700	16	410	450	438	450	432
6496	5325	16	460	500	488	500	482
7196	5950	16	510	550	538	550	532
7896	6575	16	560	600	588	600	582
8596	7200	16	610	650	638	650	632
9296	7825	16	660	700	688	700	682
Non-Std Sizes		16	Vent Length -40mm	Slot Length +40mm	Vent Length -12mm	Slot Length +40mm	Vent Length -18mm
					Slot Length +28mm		Slot Length +22mm

Cross Section Dimensions

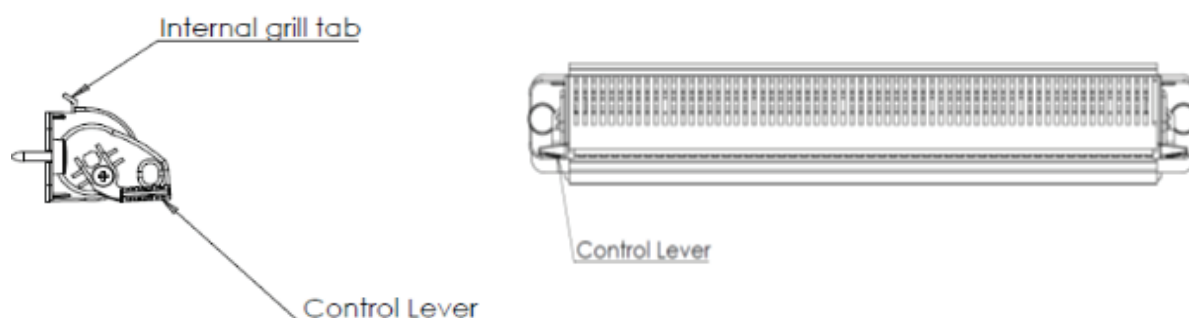


Dimensions in mm

User Guide

Operation

1. To open the vent grip the control lever as indicated and pull until open to the desired amount. The SM 1400 is fully adjustable between fully opened and fully closed.
2. To close the vent grip the control lever as indicated and push until fully closed.



3. Do not block the internal vent or external hood.

For the ventilation to work effectively the vent should be left in the open position as much as possible to maintain the indoor air quality and a healthy indoor environment.

Maintenance

The SM1400 requires very little maintenance other than the occasional cleaning.

- Wipe the Ventilator with a clean damp cloth. The frequency at which this needs to be done is dependent on local conditions.
- Clean away blockages with a soft brush or cloth.
- If vent is supplied with an internal grille; this can be removed and cleaned with a damp cloth.
- Do not lubricate.
- Where there is access and it is safe to do so; the above instructions also apply to the hood.